



The Bayside Glen Eira Kingston Local Learning & Employment Network Strategic Priorities 2019

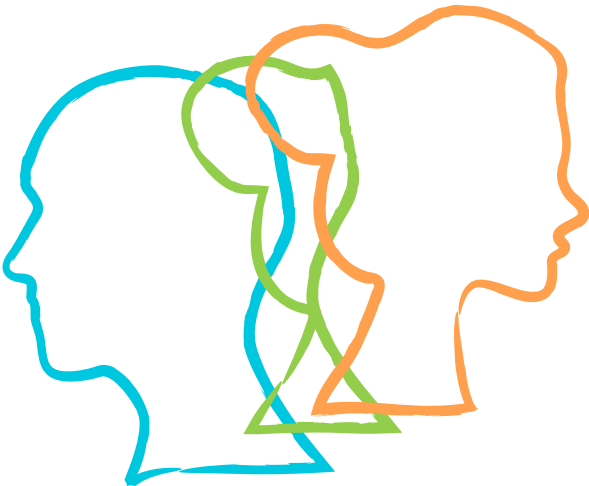
“BGKLEN is fantastic. BGKLEN is a great focal point for schools, clients and the community for information and networking/referrals, etc.”

Awareness

Our stakeholders know what we do, with **76%** having good knowledge of our operations.

Contact

Our stakeholders have regular contact with our services, with around **60%** having **monthly contact with us.**



“I wish there was more funding available to be able to provide even more support mechanisms, particularly for those disengaged from education.”

The LLEN is particularly helpful with educational resources targeted at specific groups within school settings.”

Our Current Role

- We are expert **connectors, network builders and information sharers** with the majority of our users utilising our services in these areas
- We are the creators of **Educational Resources** and leading providers of **Structured Workplace Learning**

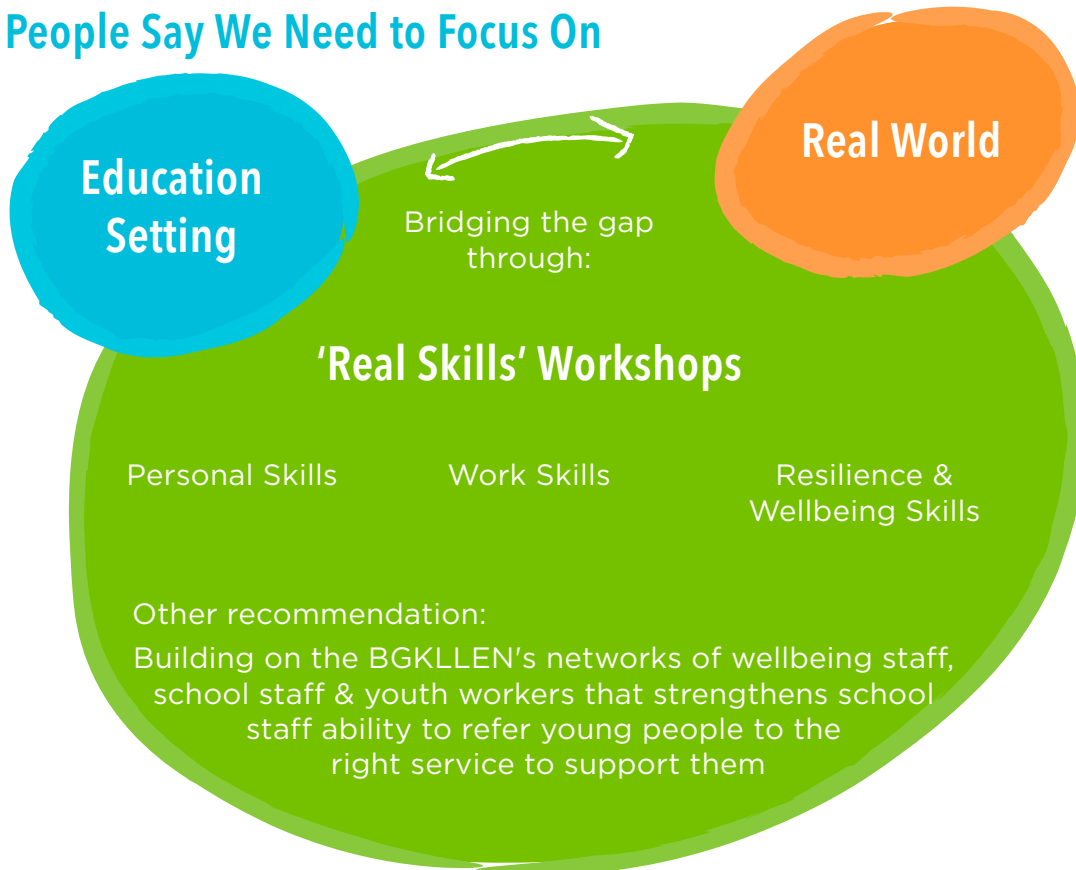
The Service Gaps

- 25% (or 1/4) of survey respondents identified service coordination as a key service gap in the region
- 26% (or over 1/4) of survey respondents identified life skills and accessibility of life skill education as a key service gap in the region
- 14% (or over 1/7) of survey respondents identified meaningful career opportunities as a key service gap in the region

Worrying Trends

- 86% of survey respondents shared concern about rising prevalence of mental health issues
- These extended to stress, anxiety, purpose, coping skills and resilience

Our People Say We Need to Focus On



Our Basis for Action

89% of our people said a focus on life skill development is very important

80% of our people said a focus on developing future work skills is very important

69% said a focus on identifying a meaningful career path is very important

Our New Strategic Priorities for 2019

1

Life Skills Development

2

Career & Work Skills Development

3

Expanding Student Mental Health Support

- + As well as pursuing our current role of service coordination, growing the structured workplace learning program, and helping students build positive connections in schools.